



# Australian Bureau of Statistics

CATALOGUE NO. 8635.7

EMBARGOED UNTIL 11.30 A.M. 2 SEPTEMBER 1994

## TOURIST ACCOMMODATION, NORTHERN TERRITORY, JUNE QUARTER 1994

\*\*\*\*\*

### MAIN FEATURES

JUNE QUARTER 1994  
COMPARED WITH  
JUNE QUARTER 1993

#### HOTELS, MOTELS AND GUEST HOUSES

- Rooms available increased by 2.1 per cent from 5,165 to 5,276 while bed spaces increased slightly from 15,116 to 15,223.
- Room nights occupied increased by 8.0 per cent from 254,215 to 274,634 overall. Increases were 18.3 per cent for Alice Springs, 8.4 per cent for Tennant Creek and 4.3 per cent for Darwin City with a 5.5 per cent decrease for Katherine.
- The room occupancy rate overall rose from 54.1 per cent to 57.2 per cent, with Alice Springs, Tennant Creek and Darwin City recording increases of 6.0, 2.2 and 1.0 percentage points, respectively, while Katherine recorded a fall of 4.9 percentage points.
- Guest nights increased by 6.4 per cent from 439,972 to 468,069 and the bed occupancy rate increased from 32.0 per cent to 33.8 per cent.
- Guest arrivals at hotels, motels and guest houses increased by 8.2 per cent from 204,667 to 221,533 while the average length of stay remained at 2.1 days.
- Takings from accommodation increased by 11.8 per cent from \$19.9m to \$22.2m overall while average takings per room night occupied rose from \$78 to \$81. Accommodation takings for Alice Springs increased by 15.6 per cent, for Katherine the increase was 11.3 per cent, for Darwin City 8.7 per cent and for Tennant Creek 5.4 per cent. For the published areas, average takings per room night occupied ranged from \$83 for Darwin City to \$53 for Katherine.

#### HOLIDAY FLATS, UNITS AND HOUSES

- The number of units, etc. available for short-term letting increased by 27.6 per cent to 324 while unit nights occupied rose by 41.8 per cent from 15,226 to 21,597.
- The unit occupancy rate therefore increased from 65.9 per cent to 73.2 per cent.
- Unit lettings increased by 36.5 per cent from 3,767 to 5,143 and the average length of stay rose from 4.0 days to 4.2 days.
- Accommodation takings increased by 49.5 per cent from \$1.2m to \$1.7m with average takings per unit night occupied increasing from \$76 to \$80.

#### CARAVAN PARKS

- Caravan park capacity available decreased by 5.1 per cent from 9,312 to 8,841 powered and unpowered sites and cabins, etc. whereas site nights occupied increased by 10.6 per cent from 249,579 to 276,126.
- The site occupancy rate consequently rose by 4.6 percentage points to 34.4 per cent.
- Accommodation takings rose by 13.0 per cent from \$3.2m to \$3.6m.

#### VISITOR HOSTELS

- Bed spaces available decreased by 12.3 per cent from 3,164 to 2,776 and guest nights sold decreased by 4.1 per cent from 136,079 to 130,561 but the bed occupancy rate increased from 47.3 per cent to 52.2 per cent.
- Guest arrivals rose from 61,466 to 66,572 while the average length of stay fell from 2.2 days to 2.0 days.
- Accommodation takings were 3.6 per cent higher at \$1.7m and average takings per guest night sold increased from \$12 to \$13.

\*\*\*\*\*

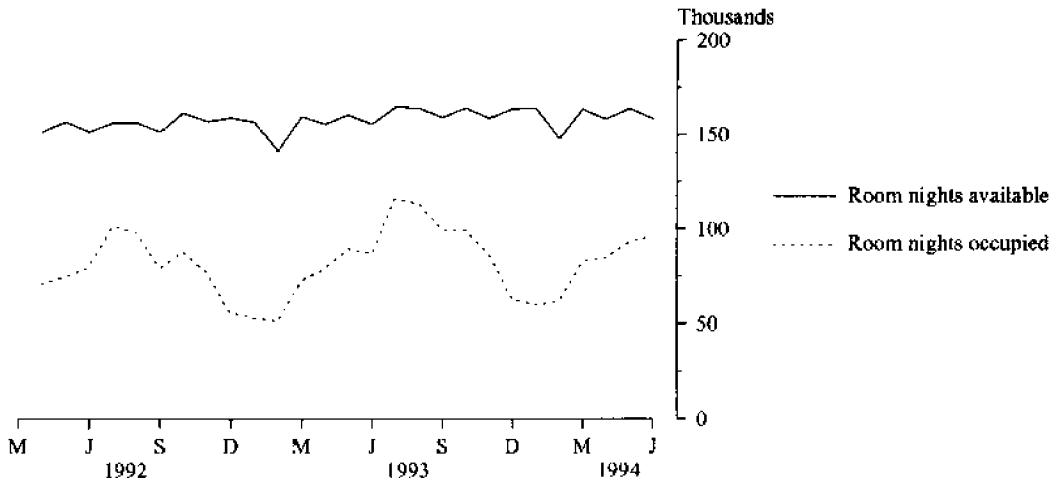
### INQUIRIES

- *for further information about statistics in this publication and the availability of related unpublished statistics, contact Brian Hay on 008 077304 or any ABS office.*
- *for information about other ABS statistics and services, please contact Information Services on Darwin (089) 432 111 or any ABS office.*

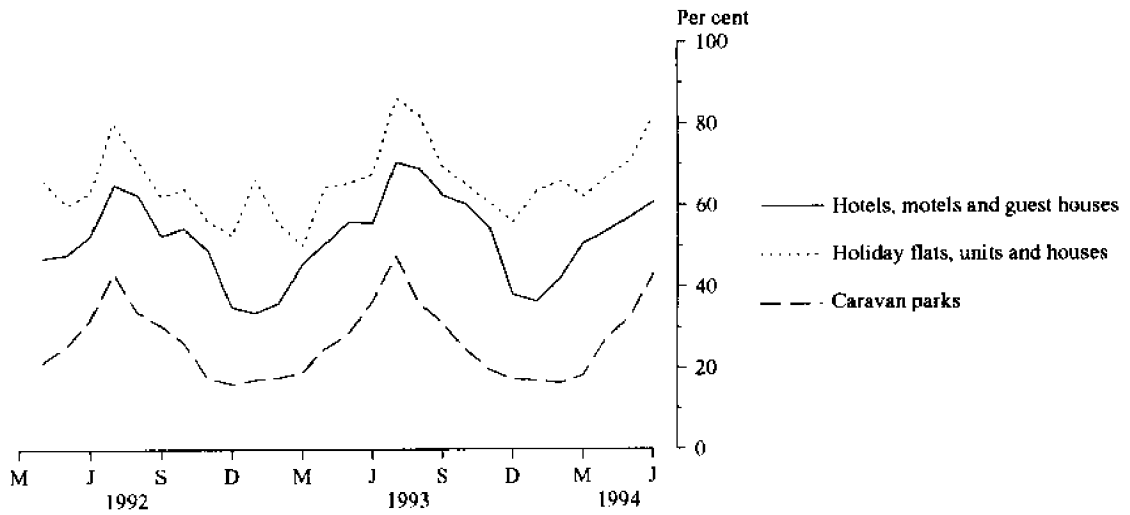
\*\*\*\*

\*\*\*\*\*

**MONTHLY ROOM NIGHTS AVAILABLE AND OCCUPIED:  
HOTELS, MOTELS AND GUEST HOUSES,  
NORTHERN TERRITORY**



**MONTHLY OCCUPANCY RATES,  
NORTHERN TERRITORY**



**MONTHLY TAKINGS FROM ACCOMMODATION,  
NORTHERN TERRITORY**

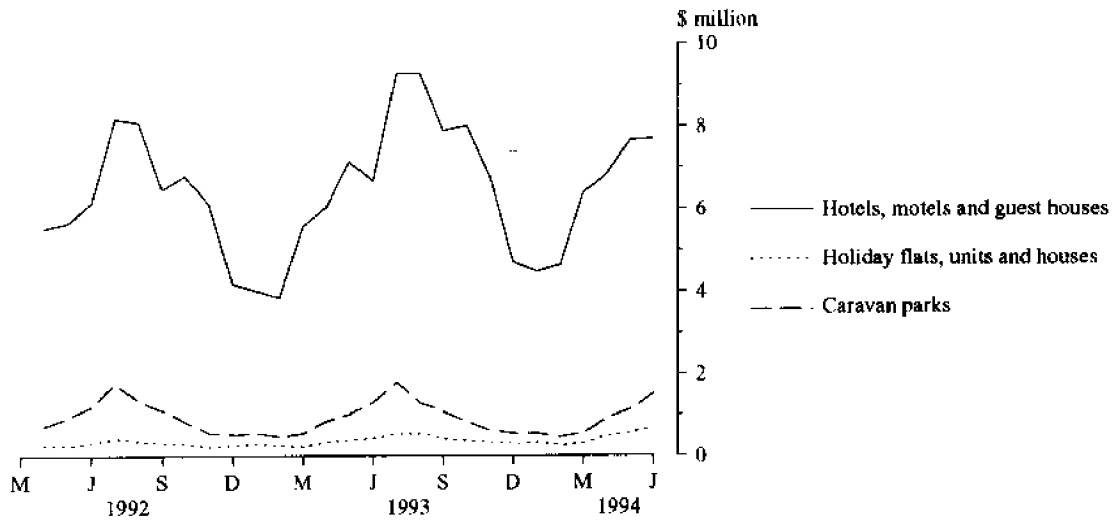


TABLE 1 — SUMMARY OF HOTELS, MOTELS AND GUEST HOUSES WITH FACILITIES, NORTHERN TERRITORY (a)

Particulars	Unit	Quarter ended				Year ended			
		March 1993	June 1993	September 1993	December 1993	March 1994	June 1994	June 1993	June 1994
<b>LICENSED HOTELS WITH FACILITIES</b>									
Establishments	No.	30	30	30	29	29	29	..	..
Guest rooms	No.	2,004	2,006	2,005	1,997	1,992	1,993	..	..
Bed spaces	No.	5,711	5,764	5,684	5,626	5,621	5,645	..	..
Employment (persons)	No.	1,663	1,755	1,887	1,801	1,786	1,881	..	..
Room nights occupied	No.	81,406	106,234	126,621	106,056	84,384	113,400	396,709	430,461
Room occupancy rate	per cent	45.2	58.2	68.6	57.7	47.1	62.5	54.7	59.1
Guest nights	No.	135,244	174,898	210,920	171,682	142,223	182,957	664,236	707,782
Bed occupancy rate	per cent	26.3	33.3	40.3	33.2	28.1	35.6	32.2	34.4
Guest arrivals	No.	67,013	87,816	108,674	88,014	82,527	87,978	311,239	367,193
Average length of stay	days	2.0	2.0	1.9	2.0	1.7	2.1	2.1	1.9
Takings from accommodation	\$'000	7,822	10,091	12,842	10,470	8,171	11,321	38,435	42,803
<b>MOTELS AND GUEST HOUSES WITH FACILITIES</b>									
Establishments	No.	60	60	63	63	64	64	..	..
Guest rooms	No.	3,127	3,159	3,290	3,285	3,287	3,283	..	..
Bed spaces	No.	9,287	9,352	9,563	9,483	9,478	9,578	..	..
Employment (persons)	No.	960	1,018	1,168	1,067	1,014	1,175	..	..
Room nights occupied	No.	94,057	147,981	201,625	141,124	120,258	161,234	529,061	624,241
Room occupancy rate	per cent	34.1	51.5	66.6	46.7	40.7	54.0	46.5	52.1
Guest nights	No.	163,773	265,074	366,629	237,837	199,981	285,112	946,392	1,089,559
Bed occupancy rate	per cent	20.0	31.1	41.7	27.3	23.4	32.7	28.1	31.3
Guest arrivals	No.	74,741	116,851	168,383	117,789	104,072	133,555	432,484	523,799
Average length of stay	days	2.2	2.3	2.2	2.0	1.9	2.1	2.2	2.1
Takings from accommodation	\$'000	5,621	9,760	13,738	9,027	7,340	10,872	34,656	40,976
<b>TOTAL HOTELS, MOTELS AND GUEST HOUSES WITH FACILITIES</b>									
Establishments	No.	90	90	93	92	93	93	..	..
Guest rooms	No.	5,131	5,165	5,295	5,282	5,279	5,276	..	..
Bed spaces	No.	14,998	15,116	15,247	15,109	15,099	15,223	..	..
Employment (persons)	No.	2,623	2,773	3,055	2,868	2,800	3,056	..	..
Room nights occupied	No.	175,463	254,215	328,246	247,180	204,642	274,634	925,770	1,054,702
Room occupancy rate	per cent	38.5	54.1	67.4	50.9	43.1	57.2	49.7	54.7
Guest nights	No.	299,017	439,972	577,549	409,519	342,204	468,069	1,610,628	1,797,341
Bed occupancy rate	per cent	22.5	32.0	41.2	29.5	25.2	33.8	29.6	32.5
Guest arrivals	No.	141,754	204,667	277,057	205,803	186,599	221,533	743,723	890,992
Average length of stay	days	2.1	2.1	2.1	2.0	1.8	2.1	2.2	2.0
Takings from accommodation	\$'000	13,443	19,851	26,579	19,496	15,510	22,193	73,091	83,779

(a) From December quarter 1993, establishments with fewer than 5 rooms have been formally excluded from the scope of this collection. See Explanatory Note 2 (page 14).

TABLE 2 — SUMMARY OF CARAVAN PARKS, NORTHERN TERRITORY

Particulars	Unit	Quarter ended				Year ended			
		March 1993	June 1993	September 1993	December 1993	March 1994	June 1994	June 1993	June 1994
<b>SHORT-TERM CARAVAN PARKS</b>									
Establishments	No.	55	57	57	55	55	56	..	..
Capacity									
On-site vans	No.	85	94	68	65	64	61	..	..
Other powered sites	No.	2,366	2,578	2,594	2,553	2,573	2,583	..	..
Unpowered sites	No.	3,715	3,631	3,200	3,127	3,088	3,067	..	..
Cabins, etc.	No.	150	157	142	147	151	162	..	..
<i>Total capacity</i>	<i>No.</i>	<i>6,316</i>	<i>6,460</i>	<i>6,004</i>	<i>5,892</i>	<i>5,876</i>	<i>5,873</i>	..	..
Sites occupied by long-term guests	No.	159	211	213	182	187	199	..	..
Other sites permanently reserved	No.	7	4	3	3	5	2	..	..
Employment (persons)	No.	270	249	256	206	213	243	..	..
Site nights occupied	No.	51,440	127,988	182,568	65,711	44,500	146,708	475,405	439,487
Site occupancy rate	per cent	9.0	22.1	33.2	12.1	8.4	27.5	18.5	20.4
Takings from accommodation	\$'000	664	1,953	2,725	949	666	2,188	6,256	6,529
<b>LONG-TERM CARAVAN PARKS</b>									
Establishments	No.	24	24	25	25	25	25	..	..
Capacity									
On-site vans	No.	233	233	245	249	250	249	..	..
Other powered sites	No.	1,850	1,824	1,851	1,902	1,897	1,872	..	..
Unpowered sites	No.	712	722	759	785	784	771	..	..
Cabins, etc.	No.	72	73	78	72	73	76	..	..
<i>Total capacity</i>	<i>No.</i>	<i>2,867</i>	<i>2,852</i>	<i>2,933</i>	<i>3,008</i>	<i>3,004</i>	<i>2,968</i>	..	..
Sites occupied by long-term guests	No.	923	947	911	871	878	922	..	..
Other sites permanently reserved	No.	7	6	5	5	8	7	..	..
Employment (persons)	No.	92	80	94	89	86	92	..	..
Site nights occupied	No.	97,103	121,591	131,435	102,805	94,023	129,418	463,330	457,681
Site occupancy rate	per cent	37.6	46.9	48.7	37.1	34.8	47.9	44.8	42.1
Takings from accommodation	\$'000	880	1,209	1,414	1,019	899	1,385	4,524	4,718
<b>TOTAL CARAVAN PARKS</b>									
Establishments	No.	79	81	82	80	80	81	..	..
Capacity									
On-site vans	No.	318	327	313	314	314	310	..	..
Other powered sites	No.	4,216	4,402	4,445	4,455	4,470	4,455	..	..
Unpowered sites	No.	4,427	4,353	3,959	3,912	3,872	3,838	..	..
Cabins, etc.	No.	222	230	220	219	224	238	..	..
<i>Total capacity</i>	<i>No.</i>	<i>9,183</i>	<i>9,312</i>	<i>8,937</i>	<i>8,900</i>	<i>8,880</i>	<i>8,841</i>	..	..
Sites occupied by long-term guests	No.	1,082	1,158	1,124	1,053	1,065	1,121	..	..
Other sites permanently reserved	No.	14	10	8	8	13	9	..	..
Employment (persons)	No.	362	329	350	295	299	335	..	..
Site nights occupied	No.	148,543	249,579	314,003	168,516	138,523	276,126	938,735	897,168
Site occupancy rate	per cent	18.0	29.8	38.3	20.6	17.3	34.4	26.1	27.7
Takings from accommodation	\$'000	1,544	3,162	4,140	1,969	1,566	3,573	10,780	11,247

TABLE 3 — SUMMARY OF HOLIDAY FLATS, UNITS AND HOUSES, NORTHERN TERRITORY

Particulars	Unit	Quarter ended				Year ended			
		March 1993	June 1993	September 1993	December 1993	March 1994	June 1994	June 1993	June 1994
Letting entities	No.	10	10	10	10	10	11	..	..
Flats, units and houses									
Single bedroom	No.	141	150	149	143	142	167	..	..
Multiple bedroom	No.	107	104	105	108	108	157	..	..
Total flats, units and houses	No.	248	254	254	251	250	324	..	..
Bed spaces	No.	994	1,020	983	1,027	1,022	1,267	..	..
Employment (persons) (a)	No.	54	52	54	63	50	82	..	..
Unit nights occupied	No.	12,803	15,226	18,535	13,704	14,355	21,597	57,259	68,191
Unit occupancy rate	per cent	57.4	65.9	79.3	60.5	63.8	73.2	63.0	69.6
Unit lettings	No.	2,398	3,767	5,329	3,765	3,962	5,143	13,679	18,199
Average length of stay	days	5.3	4.0	3.5	3.6	3.6	4.2	4.2	3.7
Takings from accommodation	\$'000	750	1,162	1,469	971	898	1,737	3,727	5,076

(a) Employment numbers exclude real estate agents and their employees.

TABLE 4 — SUMMARY OF VISITOR HOSTELS, NORTHERN TERRITORY

Particulars	Unit	Quarter ended				Year ended			
		March 1993	June 1993	September 1993	December 1993	March 1994	June 1994	June 1993	June 1994
Establishments	No.	37	36	40	39	39	36	..	..
Bed spaces	No.	3,091	3,164	3,025	2,994	2,944	2,776	..	..
Employment (persons)	No.	166	181	176	160	141	168	..	..
Guest nights	No.	106,305	136,079	169,023	116,606	100,413	130,561	517,547	516,603
Bed occupancy rate	per cent	38.2	47.3	60.7	42.3	38.1	52.2	45.6	48.4
Guest arrivals	No.	43,785	61,466	71,247	50,754	51,868	66,572	221,491	240,441
Average length of stay	days	2.4	2.2	2.4	2.3	1.9	2.0	2.3	2.1
Takings from accommodation	\$'000	1,284	1,605	1,983	1,436	1,279	1,662	6,474	6,359

TABLE 5 — HOTELS, MOTELS AND GUEST HOUSES WITH FACILITIES BY ESTABLISHMENT SIZE,  
NORTHERN TERRITORY (a)

Particulars	Establishment size (number of rooms)						Northern Territory
	1-9	10-15	16-25	26-50	51-100	101+	
ESTABLISHMENTS, CAPACITY AND EMPLOYMENT							
<i>June quarter 1993—</i>							
Establishments	6	8	18	19	26	13	90
Guest rooms	38	101	372	700	1,914	2,040	5,165
Bed spaces	113	290	1,169	2,073	5,433	6,038	15,116
Employment (persons)	42	82	179	372	947	1,151	2,773
<i>June quarter 1994—</i>							
Establishments	6	9	19	20	26	13	93
Guest rooms	39	116	392	733	1,958	2,038	5,276
Bed spaces	117	339	1,218	2,205	5,376	5,968	15,223
Employment (persons)	35	124	166	408	1,056	1,267	3,056
ROOM NIGHTS OCCUPIED							
<i>June quarter 1993</i>	949	2,931	15,859	30,406	91,473	112,597	254,215
<i>1994—</i>							
April	287	1,318	5,570	10,002	29,648	37,943	84,768
May	335	1,668	6,169	10,993	31,889	42,560	93,614
June	279	2,122	6,917	12,482	34,578	39,874	96,252
<i>June quarter 1994</i>	901	5,108	18,656	33,477	96,115	120,377	274,634
ROOM OCCUPANCY RATES (per cent)							
<i>June quarter 1993</i>	27.4	31.9	46.8	47.7	52.5	60.7	54.1
<i>1994—</i>							
April	24.5	37.9	47.4	45.5	50.5	62.1	53.6
May	27.7	46.4	50.8	48.4	52.5	67.4	57.2
June	23.8	61.0	58.8	56.8	58.9	65.2	60.8
<i>June quarter 1994</i>	25.4	48.4	52.3	50.2	53.9	64.9	57.2
GUEST NIGHTS							
<i>June quarter 1993</i>	1,772	4,987	25,435	55,107	163,275	189,396	439,972
<i>1994—</i>							
April	522	2,121	9,965	18,115	51,332	64,002	146,057
May	629	2,487	10,697	18,332	54,664	68,906	155,715
June	485	3,486	12,304	23,176	60,410	66,436	166,297
<i>June quarter 1994</i>	1,636	8,094	32,966	59,623	166,406	199,344	468,069
BED OCCUPANCY RATES (per cent)							
<i>June quarter 1993</i>	17.2	18.9	23.9	29.2	33.0	34.5	32.0
<i>1994—</i>							
April	14.9	20.9	27.3	27.4	31.8	35.7	32.0
May	17.3	23.7	28.3	26.8	32.8	37.2	33.0
June	13.8	34.3	33.7	35.0	37.5	37.1	36.4
<i>June quarter 1994</i>	15.4	26.2	29.7	29.7	34.0	36.7	33.8
GUEST ARRIVALS							
<i>June quarter 1993</i>	1,466	3,838	10,848	24,306	71,332	92,877	204,667
<i>1994—</i>							
April	518	1,339	4,597	9,446	24,913	29,477	70,290
May	448	1,525	4,656	9,362	26,135	30,737	72,863
June	433	2,213	5,225	12,186	28,344	29,979	78,380
<i>June quarter 1994</i>	1,399	5,077	14,478	30,994	79,392	90,193	221,533
AVERAGE LENGTH OF STAY (days)							
<i>June quarter 1993</i>	1.2	1.3	2.3	2.3	2.3	2.0	2.1
<i>June quarter 1994</i>	1.2	1.6	2.3	1.9	2.1	2.2	2.1
TAKINGS FROM ACCOMMODATION (\$'000)							
<i>June quarter 1993</i>	42	161	920	1,741	5,850	11,138	19,851
<i>1994—</i>							
April	14	62	323	586	1,974	3,852	6,811
May	16	78	351	658	2,237	4,330	7,670
June	12	108	411	752	2,422	4,007	7,712
<i>June quarter 1994</i>	41	248	1,085	1,997	6,633	12,188	22,193

(a) From December quarter 1993, establishments with fewer than 5 rooms have been formally excluded from the scope of this collection. See Explanatory Note 2 (page 14).

TABLE 6A — HOTELS, MOTELS AND GUEST HOUSES WITH FACILITIES BY STAR GRADING BY STATISTICAL DIVISION, NORTHERN TERRITORY (a)

Particulars	Darwin (SD)				Northern Territory - Balance (SD)			
	Star grading			Total	Star grading			Total
	2	3, 4 and 5	Ungraded and 1		2	3, 4 and 5	Ungraded and 1	
<b>ESTABLISHMENTS, CAPACITY AND EMPLOYMENT</b>								
<i>June quarter 1993—</i>								
Establishments	11	7	7	25	22	22	21	65
Guest rooms	473	941	213	1,627	875	2,093	570	3,538
Bed spaces	1,414	2,452	624	4,490	2,468	6,559	1,599	10,626
Employment (persons)	229	979	39	1,247	364	874	288	1,526
<i>June quarter 1994—</i>								
Establishments	9	8	9	26	30	17	20	67
Guest rooms	444	998	232	1,674	1,382	1,800	420	3,602
Bed spaces	1,278	2,542	684	4,504	3,962	5,555	1,202	10,719
Employment (persons)	228	1,072	117	1,417	520	883	236	1,639
<b>ROOM NIGHTS OCCUPIED</b>								
<i>June quarter 1993</i>	31,565	63,379	10,763	105,707	30,385	100,460	17,463	148,508
<i>1994—</i>								
April	8,337	18,729	3,500	30,566	17,193	32,475	4,534	54,202
May	9,695	23,980	4,732	38,407	17,810	32,816	4,581	55,207
June	10,809	25,061	5,443	41,313	19,395	30,112	5,432	54,939
<i>June quarter 1994</i>	28,841	67,770	13,675	110,286	54,398	95,403	14,547	164,348
<b>ROOM OCCUPANCY RATES (per cent)</b>								
<i>June quarter 1993</i>	73.3	74.0	55.5	71.4	38.4	52.7	33.7	46.1
<i>1994—</i>								
April	62.6	62.6	50.3	60.9	41.5	60.1	36.0	50.2
May	70.4	77.5	65.8	74.0	41.6	58.8	35.2	49.4
June	81.1	83.7	78.2	82.3	46.8	55.8	43.1	50.8
<i>June quarter 1994</i>	71.4	74.6	64.8	72.4	43.3	58.2	38.1	50.1
<b>GUEST NIGHTS</b>								
<i>June quarter 1993</i>	54,883	99,696	19,075	173,654	52,182	181,167	32,969	266,318
<i>1994—</i>								
April	14,438	29,195	5,560	49,193	29,587	58,993	8,284	96,864
May	16,276	36,610	7,411	60,297	29,090	57,953	8,375	95,418
June	18,878	39,129	9,292	67,299	34,234	54,888	9,876	98,998
<i>June quarter 1994</i>	49,592	104,934	22,263	176,789	92,911	171,834	26,535	291,280
<b>BED OCCUPANCY RATES (per cent)</b>								
<i>June quarter 1993</i>	42.7	44.7	33.6	42.5	23.2	30.4	22.7	27.5
<i>1994—</i>								
April	37.7	38.3	27.1	36.4	24.9	35.4	23.0	30.1
May	41.1	46.5	35.0	43.2	23.7	33.7	22.5	28.7
June	49.2	51.3	45.3	49.8	28.8	32.9	27.4	30.8
<i>June quarter 1994</i>	42.6	45.4	35.8	43.1	25.8	34.0	24.3	29.9
<b>GUEST ARRIVALS</b>								
<i>June quarter 1993</i>	16,476	35,610	6,440	58,526	30,237	94,431	21,473	146,141
<i>1994—</i>								
April	5,754	11,158	2,025	18,937	16,635	29,208	5,510	51,353
May	6,085	14,021	2,491	22,597	16,422	27,928	5,916	50,266
June	6,777	14,921	2,511	24,209	20,539	26,187	7,445	54,171
<i>June quarter 1994</i>	18,616	40,100	7,027	65,743	53,596	83,323	18,871	155,790
<b>AVERAGE LENGTH OF STAY (days)</b>								
<i>June quarter 1993</i>	3.3	2.8	3.0	3.0	1.7	1.9	1.5	1.8
<i>June quarter 1994</i>	2.7	2.6	3.2	2.7	1.7	2.1	1.4	1.9
<b>TAKINGS FROM ACCOMMODATION (\$'000)</b>								
<i>June quarter 1993</i>	1,952	5,956	512	8,420	1,588	8,762	1,081	11,431
<i>1994—</i>								
April	516	1,788	155	2,459	935	3,140	278	4,352
May	705	2,299	221	3,225	974	3,195	276	4,445
June	735	2,451	286	3,472	1,109	2,816	315	4,241
<i>June quarter 1994</i>	1,956	6,538	662	9,156	3,018	9,151	868	13,037

(a) From December quarter 1993, establishments with fewer than 5 rooms have been formally excluded from the scope of this collection. See Explanatory Note 2 (page 14).

**TABLE 6B—HOTELS, MOTELS AND GUEST HOUSES WITH FACILITIES BY STAR GRADING,  
NORTHERN TERRITORY (a)**

Particulars	Licensed hotels with facilities	Motels and guest houses	Star grading					Northern Territory
			1	2	3	4 and 5	Ungraded	
<b>ESTABLISHMENTS, CAPACITY AND EMPLOYMENT</b>								
<i>June quarter 1993—</i>								
Establishments	30	60	13	33	24	5	15	90
Guest rooms	2,006	3,159	358	1,348	2,047	987	425	5,165
Bed spaces	5,764	9,352	1,055	3,882	6,244	2,767	1,168	15,116
Employment (persons)	1,755	1,018	139	593	864	989	188	2,773
<i>June quarter 1994—</i>								
Establishments	29	64	14	39	20	5	15	93
Guest rooms	1,993	3,283	340	1,826	1,811	987	312	5,276
Bed spaces	5,645	9,578	1,006	5,240	5,329	2,768	880	15,223
Employment (persons)	1,881	1,175	188	748	893	1,062	165	3,056
<b>ROOM NIGHTS OCCUPIED</b>								
<i>June quarter 1993</i>	106,234	147,981	15,685	62,150	112,768	51,071	12,541	254,215
<i>1994—</i>								
April	34,398	50,370	4,137	25,530	34,072	17,132	3,897	84,768
May	40,482	53,132	5,064	27,505	36,529	20,267	4,249	93,614
June	38,520	57,732	5,891	30,204	36,972	18,201	4,984	96,252
<i>June quarter 1994</i>	113,400	161,234	15,092	83,239	107,573	55,600	13,130	274,634
<b>ROOM OCCUPANCY RATES (per cent)</b>								
<i>June quarter 1993</i>	58.2	51.5	48.1	50.7	60.5	56.9	32.4	54.1
<i>1994—</i>								
April	57.5	51.1	40.6	46.6	62.7	57.9	41.6	53.6
May	65.5	52.2	48.0	48.6	65.1	66.2	43.9	57.2
June	64.4	58.6	57.8	55.1	68.1	61.5	53.2	60.8
<i>June quarter 1994</i>	62.5	54.0	48.8	50.1	65.3	61.9	46.2	57.2
<b>GUEST NIGHTS</b>								
<i>June quarter 1993</i>	174,898	265,074	30,655	107,065	201,903	78,960	21,389	439,972
<i>1994—</i>								
April	55,941	90,116	7,587	44,025	61,768	26,420	6,257	146,057
May	63,969	91,746	9,171	45,366	64,473	30,090	6,615	155,715
June	63,047	103,250	10,899	53,112	65,450	28,567	8,269	166,297
<i>June quarter 1994</i>	182,957	285,112	27,657	142,503	191,691	85,077	21,141	468,069
<b>BED OCCUPANCY RATES (per cent)</b>								
<i>June quarter 1993</i>	33.3	31.1	31.9	30.3	35.5	31.4	20.1	32.0
<i>1994—</i>								
April	33.0	31.4	25.1	28.0	38.6	31.8	23.7	32.0
May	36.6	30.9	29.4	27.9	39.0	35.1	24.2	33.0
June	37.2	35.9	36.1	33.8	40.9	34.4	31.3	36.4
<i>June quarter 1994</i>	35.6	32.7	30.2	29.9	39.5	33.8	26.4	33.8
<b>GUEST ARRIVALS</b>								
<i>June quarter 1993</i>	87,816	116,851	15,346	46,713	87,969	42,072	12,567	204,667
<i>1994—</i>								
April	28,185	42,105	4,283	22,389	25,763	14,603	3,252	70,290
May	29,971	42,892	5,227	22,507	26,316	15,633	3,180	72,863
June	29,822	48,558	6,131	27,316	26,535	14,573	3,825	78,380
<i>June quarter 1994</i>	87,978	133,555	15,641	72,212	78,614	44,809	10,257	221,533
<b>AVERAGE LENGTH OF STAY (days)</b>								
<i>June quarter 1993</i>	2.0	2.3	2.0	2.3	2.3	1.9	1.7	2.1
<i>June quarter 1994</i>	2.1	2.1	1.8	2.0	2.4	1.9	2.1	2.1
<b>TAKINGS FROM ACCOMMODATION (\$'000)</b>								
<i>June quarter 1993</i>	10,091	9,760	718	3,540	9,030	5,688	875	19,851
<i>1994—</i>								
April	3,512	3,299	214	1,451	2,903	2,024	219	6,811
May	4,049	3,622	272	1,679	3,125	2,370	225	7,670
June	3,761	3,952	335	1,844	3,177	2,090	266	7,712
<i>June quarter 1994</i>	11,321	10,872	820	4,974	9,205	6,484	710	22,193

(a) From December quarter 1993, establishments with fewer than 5 rooms have been formally excluded from the scope of this collection. See Explanatory Note 2 (page 14).



TABLE 7 — HOTELS, MOTELS AND GUEST HOUSES WITH FACILITIES BY SELECTED LOCAL GOVERNMENT AREAS,  
NORTHERN TERRITORY (a)

Particulars	Darwin City (b)	Alice Springs (T)	Katherine (T)	Tennant Creek (T)
ESTABLISHMENTS, CAPACITY AND EMPLOYMENT				
<i>June quarter 1993</i>				
Establishments	25	21	8	4
Guest rooms	1,627	1,541	462	185
Bed spaces	4,490	4,641	1,363	489
Employment (persons)	1,247	452	179	65
<i>June quarter 1994</i>				
Establishments	26	22	8	4
Guest rooms	1,674	1,593	475	189
Bed spaces	4,504	4,840	1,314	495
Employment (persons)	1,417	528	178	56
ROOM NIGHTS OCCUPIED				
<i>June quarter 1993</i>	105,707	58,180	25,445	5,950
<i>1994</i>				
April	30,566	23,719	7,125	1,890
May	38,407	22,885	8,268	2,182
June	41,313	22,201	8,654	2,376
<i>June quarter 1994</i>	110,286	68,805	24,047	6,448
ROOM OCCUPANCY RATES (per cent)				
<i>June quarter 1993</i>	71.4	41.5	60.5	35.3
<i>1994</i>				
April	60.9	49.6	50.0	33.3
May	74.0	46.3	56.1	37.2
June	82.3	46.5	60.7	41.9
<i>June quarter 1994</i>	72.4	47.5	55.6	37.5
GUEST NIGHTS				
<i>June quarter 1993</i>	173,654	100,288	40,999	10,588
<i>1994</i>				
April	49,193	40,399	12,802	3,340
May	60,297	37,499	14,297	3,694
June	67,299	38,788	14,697	4,393
<i>June quarter 1994</i>	176,789	116,686	41,796	11,427
BED OCCUPANCY RATES (per cent)				
<i>June quarter 1993</i>	42.5	23.7	33.1	23.8
<i>1994</i>				
April	36.4	27.8	32.5	22.5
May	43.2	25.0	35.1	24.1
June	49.8	26.7	37.3	29.6
<i>June quarter 1994</i>	43.1	26.5	35.0	25.4
GUEST ARRIVALS				
<i>June quarter 1993</i>	58,526	47,125	14,572	8,699
<i>1994</i>				
April	18,937	18,129	5,433	2,543
May	22,597	16,769	6,247	3,138
June	24,209	16,305	7,389	3,916
<i>June quarter 1994</i>	65,743	51,203	19,069	9,597
AVERAGE LENGTH OF STAY (days)				
<i>June quarter 1993</i>	3.0	2.1	2.8	1.2
<i>June quarter 1994</i>	2.7	2.3	2.2	1.2
TAKINGS FROM ACCOMMODATION (\$'000)				
<i>June quarter 1993</i>	8,420	3,850	1,151	352
<i>1994</i>				
April	2,459	1,518	356	104
May	3,225	1,512	432	128
June	3,472	1,421	493	139
<i>June quarter 1994</i>	9,156	4,451	1,281	371

(a) From December quarter 1993, establishments with fewer than 5 rooms have been formally excluded from the scope of this collection. See Explanatory Note 2 (page 14).

(b) As there are no in-scope establishments outside the Darwin City boundaries, data for Darwin City are the same as for the Darwin Statistical Division.

TABLE 8 — HOLIDAY FLATS AND UNITS BY STATISTICAL DIVISION, NORTHERN TERRITORY

<i>Particulars</i>	<i>Darwin (SD)</i>	<i>Northern Territory - Balance (SD)</i>	<i>Northern Territory</i>
LETTING ENTITIES, CAPACITY AND EMPLOYMENT			
<i>June quarter 1993—</i>			
Letting entities	6	4	10
Flats, units and houses			
Single bedroom	79	71	150
Multiple bedroom	91	13	104
<i>Total flats, units and houses</i>	<i>170</i>	<i>84</i>	<i>254</i>
Bed spaces	651	369	1,020
Employment (persons) (a)	40	12	52
<i>June quarter 1994—</i>			
Letting entities	7	4	11
Flats, units and houses			
Single bedroom	97	70	167
Multiple bedroom	143	14	157
<i>Total flats, units and houses</i>	<i>240</i>	<i>84</i>	<i>324</i>
Bed spaces	896	371	1,267
Employment (persons) (a)	55	27	82
UNIT NIGHTS OCCUPIED			
<i>June quarter 1993</i>	<i>10,800</i>	<i>4,426</i>	<i>15,226</i>
<i>1994—</i>			
April	4,938	1,566	6,504
May	5,657	1,480	7,137
June	6,235	1,721	7,956
<i>June quarter 1994</i>	<i>16,830</i>	<i>4,767</i>	<i>21,597</i>
UNIT OCCUPANCY RATES (per cent)			
<i>June quarter 1993</i>	<i>69.8</i>	<i>57.9</i>	<i>65.9</i>
<i>1994—</i>			
April	68.6	62.1	66.9
May	76.0	56.8	71.1
June	86.6	68.3	81.9
<i>June quarter 1994</i>	<i>77.1</i>	<i>62.4</i>	<i>73.2</i>
UNIT LETTINGS			
<i>June quarter 1993</i>	<i>1,848</i>	<i>1,919</i>	<i>3,767</i>
<i>1994—</i>			
April	828	685	1,513
May	949	661	1,610
June	1,203	817	2,020
<i>June quarter 1994</i>	<i>2,980</i>	<i>2,163</i>	<i>5,143</i>
AVERAGE LENGTH OF STAY (days)			
<i>June quarter 1993</i>	<i>5.8</i>	<i>2.3</i>	<i>4.0</i>
<i>1994—</i>			
April	6.0	2.3	4.3
May	6.0	2.2	4.4
June	5.2	2.1	3.9
<i>June quarter 1994</i>	<i>5.6</i>	<i>2.2</i>	<i>4.2</i>
TAKINGS FROM ACCOMMODATION (\$'000)			
<i>June quarter 1993</i>	<i>854</i>	<i>309</i>	<i>1,162</i>
<i>1994—</i>			
April	358	118	475
May	454	108	562
June	572	128	700
<i>June quarter 1994</i>	<i>1,383</i>	<i>354</i>	<i>1,737</i>

(a) Employment numbers exclude real estate agents and their employees.

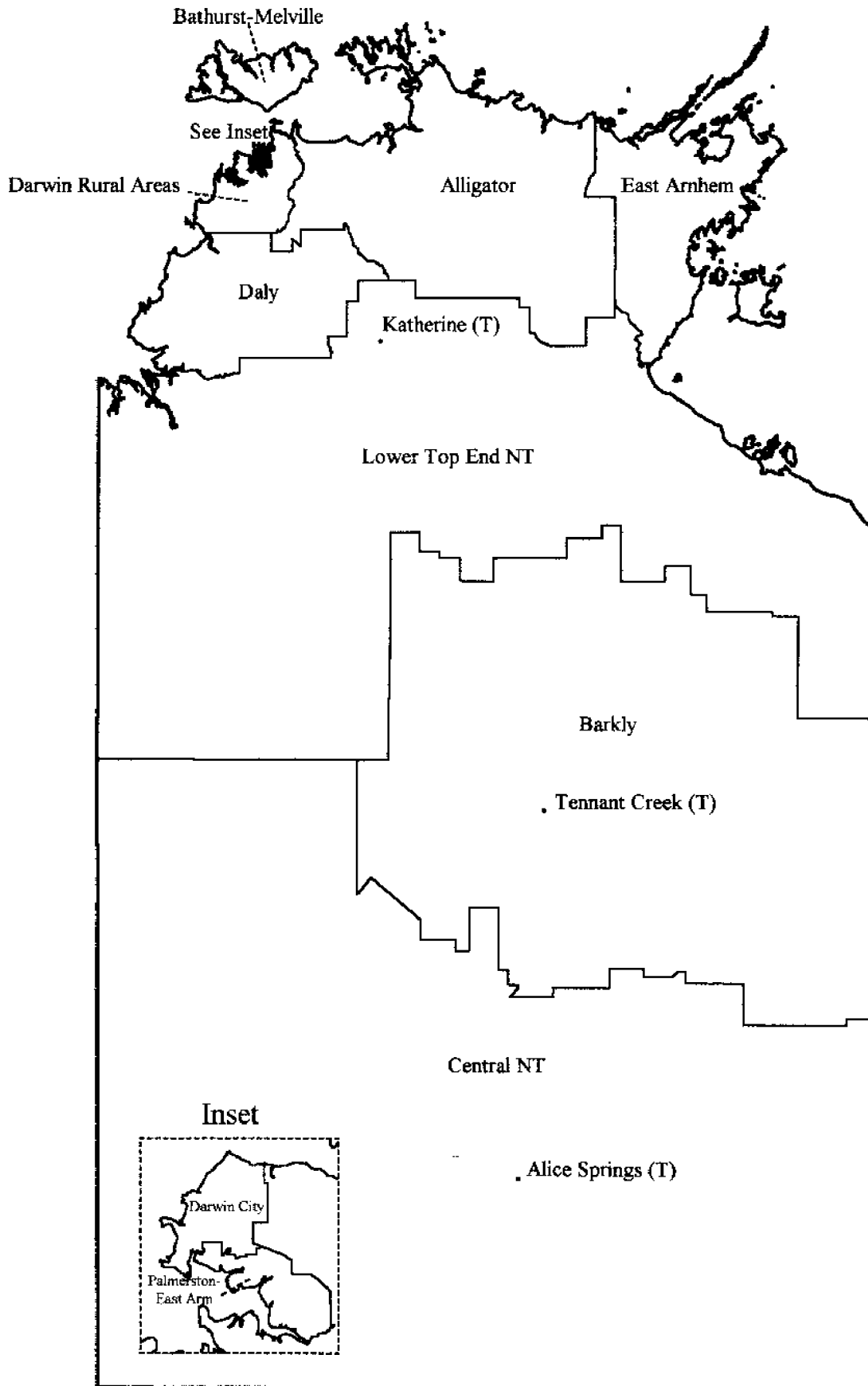
TABLE 9 — CARAVAN PARKS BY STATISTICAL AREA AND TYPE, NORTHERN TERRITORY

Particulars	Darwin (SD) and Alligator (SSD)	Darwin Rural Areas and Daly (SSDs)	Lower Top End Northern Territory (SSD)	Barkly (SSD)	Central Northern Territory (SSD)	Northern Territory		Total
						Short-term parks	Long-term parks	
ESTABLISHMENTS, CAPACITY AND EMPLOYMENT								
<i>June quarter 1993—</i>								
Establishments	11	17	22	10	21	57	24	81
Capacity								
On-site vans	26	160	12	28	101	94	233	327
Other powered sites	1,230	730	856	313	1,273	2,578	1,824	4,402
Unpowered sites	509	477	867	417	2,083	3,631	722	4,353
Cabins, flats, etc.	25	36	45	31	93	157	73	230
<i>Total capacity</i>	<i>1,790</i>	<i>1,403</i>	<i>1,780</i>	<i>789</i>	<i>3,550</i>	<i>6,460</i>	<i>2,852</i>	<i>9,312</i>
Sites occupied by long-term guests	396	293	112	21	336	211	947	1,158
Other sites permanently reserved	—	2	—	2	6	4	6	10
Employment (persons)	42	55	112	41	79	249	80	329
<i>June quarter 1994—</i>								
Establishments	10	19	23	10	19	56	25	81
Capacity								
On-site vans	27	155	12	21	95	61	249	310
Other powered sites	1,237	739	910	347	1,222	2,583	1,872	4,455
Unpowered sites	418	402	894	382	1,742	3,067	771	3,838
Cabins, flats, etc.	25	55	43	28	87	162	76	238
<i>Total capacity</i>	<i>1,707</i>	<i>1,351</i>	<i>1,859</i>	<i>778</i>	<i>3,146</i>	<i>5,873</i>	<i>2,968</i>	<i>8,841</i>
Sites occupied by long-term guests	381	299	89	19	333	199	922	1,121
Other sites permanently reserved	—	5	1	1	2	2	7	9
Employment (persons)	43	64	105	43	80	243	92	335
SITE NIGHTS OCCUPIED								
<i>June quarter 1993</i>	<i>63,610</i>	<i>39,619</i>	<i>43,308</i>	<i>15,120</i>	<i>87,922</i>	<i>127,988</i>	<i>121,591</i>	<i>249,579</i>
<i>1994—</i>								
April	16,539	12,576	9,424	3,021	30,661	34,731	37,490	72,221
May	22,471	15,171	14,729	5,155	32,145	46,074	43,597	89,671
June	29,498	18,488	22,283	7,228	36,737	65,903	48,331	114,234
<i>June quarter 1994</i>	<i>68,508</i>	<i>46,235</i>	<i>46,436</i>	<i>15,404</i>	<i>99,543</i>	<i>146,708</i>	<i>129,418</i>	<i>276,126</i>
SITE OCCUPANCY RATES (per cent)								
<i>June quarter 1993</i>	<i>39.1</i>	<i>31.0</i>	<i>26.7</i>	<i>21.1</i>	<i>28.0</i>	<i>22.1</i>	<i>46.9</i>	<i>29.8</i>
<i>1994—</i>								
April	32.3	31.7	16.9	12.9	32.5	19.8	42.1	27.3
May	42.5	37.0	25.6	21.4	33.0	25.4	47.4	32.8
June	57.6	45.6	40.0	31.0	38.9	37.4	54.3	43.1
<i>June quarter 1994</i>	<i>44.1</i>	<i>38.2</i>	<i>27.4</i>	<i>21.8</i>	<i>34.8</i>	<i>27.5</i>	<i>47.9</i>	<i>34.4</i>
TAKINGS FROM ACCOMMODATION (\$'000)								
<i>June quarter 1993</i>	<i>598</i>	<i>431</i>	<i>608</i>	<i>218</i>	<i>1,306</i>	<i>1,953</i>	<i>1,209</i>	<i>3,162</i>
<i>1994—</i>								
April	148	146	140	45	440	531	387	918
May	213	172	214	77	463	680	458	1,138
June	296	218	323	118	562	977	540	1,517
<i>June quarter 1994</i>	<i>657</i>	<i>536</i>	<i>676</i>	<i>240</i>	<i>1,465</i>	<i>2,188</i>	<i>1,385</i>	<i>3,573</i>

TABLE 10 — VISITOR HOSTELS BY STATISTICAL DIVISION, NORTHERN TERRITORY

<i>Particulars</i>	<i>Darwin (SD)</i>	<i>Northern Territory - Balance (SD)</i>	<i>Northern Territory</i>
ESTABLISHMENTS, CAPACITY AND EMPLOYMENT			
<i>June quarter 1993</i>			
Establishments	14	22	36
Bed spaces	1,376	1,788	3,164
Employment (persons)	59	122	181
<i>June quarter 1994—</i>			
Establishments	12	24	36
Bed spaces	1,055	1,721	2,776
Employment (persons)	87	81	168
GUEST NIGHTS			
<i>June quarter 1993</i>			
	69,323	66,756	136,079
<i>1994—</i>			
April	16,403	24,255	40,658
May	18,331	23,646	41,977
June	22,357	25,569	47,926
<i>June quarter 1994</i>			
	57,091	73,470	130,561
BED OCCUPANCY RATES (per cent)			
<i>June quarter 1993</i>			
	55.4	41.0	47.3
<i>1994—</i>			
April	51.8	47.5	49.2
May	56.0	45.2	49.3
June	70.6	50.5	58.2
<i>June quarter 1994</i>			
	59.5	47.7	52.2
GUEST ARRIVALS			
<i>June quarter 1993</i>			
	21,342	40,124	61,466
<i>1994—</i>			
April	9,106	11,462	20,568
May	10,100	11,384	21,484
June	11,856	12,664	24,520
<i>June quarter 1994</i>			
	31,062	35,510	66,572
AVERAGE LENGTH OF STAY (days)			
<i>June quarter 1993</i>			
	3.2	1.7	2.2
<i>1994—</i>			
April	1.8	2.1	2.0
May	1.8	2.1	2.0
June	1.9	2.0	2.0
<i>June quarter 1994</i>			
	1.8	2.1	2.0
TAKINGS FROM ACCOMMODATION (\$'000)			
<i>June quarter 1993</i>			
	753	852	1,605
<i>1994—</i>			
April	197	327	523
May	221	318	539
June	272	328	600
<i>June quarter 1994</i>			
	690	972	1,662

# Northern Territory Statistical Subdivisions



## EXPLANATORY NOTES

\*\*\*\*\*

### INTRODUCTION

1 This publication contains data for Northern Territory from a quarterly survey of tourist accommodation establishments. The period covered by the latest survey is the 3 months ended 30 June 1994.

### SCOPE

2 Tourist accommodation establishments currently included in the survey comprise two groups:

- Establishments which provide predominantly short-term accommodation (i.e. for periods of less than 2 months) to the general public. These include:

*Hotels, motels and guest houses, with facilities* being hotels licensed to operate a public bar and motels, private hotels and guest houses all of which provide a bath (or shower) and toilet in most guest rooms and have breakfast available for guests.

NOTE: From December quarter 1993, hotel, motel and guest house establishments with fewer than five rooms have been formally excluded from the scope of this statistical collection. This change in scope resulted in the exclusion of one establishment which in the September quarter 1993 Survey aggregates for Northern Territory represented 1.1 per cent of hotel, motel and guest house establishments but accounted for a negligible proportion of accommodation capacity, occupancy and takings.

*Holiday flats, units and houses* (excluding establishments predominantly operated on a time share basis) which are operated by owners or managers who have sole letting rights to at least five flats, units or houses or by real estate agents for short-term letting. They are mainly self-contained in terms of cooking, bath (or shower) and toilet facilities and do not have breakfast available for guests. Data for holiday flats, units and houses include short-term owner occupation as well as paying guest occupation.

*Visitor hostels* which provide accommodation to visitors on a bed basis (rather than by the room). This category does not include establishments providing charity type accommodation (e.g. Salvation Army hostels) nor hotels, motels and guest houses without in-room facilities which provide accommodation on a per room basis.

- *Caravan parks* which provide either predominantly short-term (i.e. for periods of less than 2 months) or predominantly long-term (i.e. for periods of 2 months or more) accommodation to the general public and which provide powered sites for caravans and toilet, shower and laundry facilities for guests.

3 Data collected and published for each type of establishment (other than holiday flats, units and houses) include both long-term and short-term guests at these establishments.

4 Establishments which provide more than one type of accommodation (e.g. a motel with attached caravan park) are treated as two or more separate establishments. However, self-contained units, flats, cabins, etc. attached to hotels, motels or to caravan parks are included in the capacity for those establishments and not treated as separate holiday flat, unit or house establishments.

### DEFINITIONS

5 *Number of establishments.* For hotels, motels and guest houses, caravan parks and visitor hostels, the number of establishments within the scope of the survey which operated for any part of the survey period, or which closed temporarily for the quarter for seasonal reasons.

6 *Number of letting entities.* For holiday flats, units and houses, the number of owners, managers or real estate agents within the scope of the survey who operated for any part of the survey period.

7 Capacity in terms of *Guest rooms, Bed spaces, Holiday units* or *Caravan park sites, etc.* is the maximum number available to accommodate paying guests during the survey period. Capacity closed temporarily for seasonal reasons is included.

8 *Bed spaces.* Three-quarter beds are counted as one bed space; double beds as two bed spaces. Cots are excluded.

9 *Total caravan park capacity* comprises *On-site vans, Other powered sites, Unpowered sites* and *Cabins, etc.*

\*\*\*\*\*

EXPLANATORY NOTES *continued*DEFINITIONS —*continued*

**10** *Room nights available.* The number of guest rooms available multiplied by the number of days for which they were available during the survey period. Includes operating periods only for establishments closing (other than for seasonal reasons) or opening during the survey period.

**11** Occupancy in terms of *Room nights*, *Unit nights* or *Site nights occupied* refers to the total number of nights each guest room, holiday unit or caravan park site, etc. was occupied during the survey period.

NOTE: From September quarter 1992, caravan park sites, etc. permanently reserved for 2 months or more at the end of the survey period but only casually occupied by their tenants have been recorded continuously as *Site nights occupied* irrespective of whether the tenants of individual sites were in residence on any particular night. (See also paragraph 14 below). Previously, usage of these sites was recorded as *Site nights occupied* only when their tenants were in the park.

**12** Occupancy in terms of *Guest nights* refers to the total number of nights each paying guest stayed during the survey period.

**13** *Sites occupied by long-term guests.* The total number of sites, etc. occupied at the end of the survey period by guests who have stayed continuously for 2 months or more.

**14** *Other sites permanently reserved.* The total number of powered and unpowered sites, on-site vans and cabins, etc. continuously let for 2 months or more by the end of the survey period to tenants who occupy the sites only on a casual or sporadic basis. Separate data for this item are available only from September quarter 1992.

**15** *Occupancy rates* represent occupancy expressed as a percentage of total capacity available during the survey period – c.g.

$$\text{Room occupancy rate (\%)} \text{ for the period} = \frac{\text{Room nights occupied}}{(\text{Guest rooms}) \times (\text{No. of days in the period})} \times 100$$

providing that, for establishments closing (other than for seasonal reasons) or opening during the period, the denominator of the above expression includes only operating periods.

**16** *Guest arrivals.* The total number of paying guests counted only on the first night they stayed at the accommodation establishment.

**17** *Unit lettings.* The total number of times a holiday flat, unit or house was occupied by a new tenant, counted only on the first night it was occupied by the new tenant.

**18** *Average length of stay* is expressed in number of days and calculated:

- for hotels, motels and guest houses and for visitor hostels, by dividing *Guest nights* by *Guest arrivals* and
- for holiday flats, units and houses, by dividing *Unit nights occupied* by *Unit lettings*.

**19** *Takings from accommodation.* Revenue received from the provision of accommodation. Takings from meals are excluded. Takings from accommodation for each month generally represent the takings received during that month. Where payments are received in advance of, or after, the provision of accommodation to guests, the monthly figure for takings from accommodation may not necessarily bear a direct relationship to the number of guests accommodated during the month. Rental and storage fees paid to caravan parks for the keeping of private vans in parks are included in the takings of the month they are received.

**20** *Star grading.* The grading of hotels and motels with facilities based on the classification system used by members of the Australian Automobile Association (AAA). The gradings are allocated according to a points system based on the amenities and facilities available to guests. Details of the grading scheme are contained in the RACV-RAASA members' publication *Accommodation Australia*, or the individual tour guides produced by members of the AAA. For the purpose of classifying establishments to a star grading in this publication, 'half' star gradings are ignored (e.g. a two and a half star grading has been shown as two star).

## EXPLANATORY NOTES—continued

\*\*\*\*\*

## DEFINITIONS—continued

**21** *Employment.* The number of persons working at accommodation establishments at the end of the survey period (including working proprietors and those working on other than accommodation activities).

AUSTRALIAN STANDARD  
GEOGRAPHICAL  
CLASSIFICATION

**22.** Statistics presented in this publication have been classified according to the Australian Standard Geographical Classification (ASGC), Edition 2.3. This classification incorporates a number of hierarchic structures of geographic areas. The appropriate spatial units of the main structure of the ASGC used in this publication are:

*Statistical Local Areas (SLAs)* which are legal Local Government Areas or equivalent spatial units which serve as the smallest type of spatial unit considered appropriate for the presentation of statistics which add, without gaps or overlaps, to;

*Statistical Subdivisions (SSDs)* which in turn represent another, higher hierarchic level and add, without gaps or overlaps, to;

*Statistical Divisions (SDs)* which in turn add, without gaps or overlaps, to;

*The Northern Territory.*

For more detailed information, refer to the ASGC (1216.0).

The Northern Territory comprises three SDs, i.e. Darwin, Northern Territory Balance, and Offshore Areas and Migratory. Only the first two of these units are appropriate for the presentation of statistics in this publication and together add to the Northern Territory.

## UNPUBLISHED STATISTICS

**23** The ABS may make available on request certain unpublished tourist accommodation statistics. A charge may be made for this information.

## RELATED PUBLICATIONS

**24** Publications for Australia, and each State and Territory, are released by the respective offices of the ABS. Tourist accommodation statistics for past quarters are available on request.

**25** Other ABS publications which may be of interest include:

*Directory of Tourism Statistics, 1991* (1130.0) (irregular)

*Overseas Arrivals and Departures, Australia* (3401.0) (monthly)

*Tourism Indicators Australia* (8634.0) (quarterly)

*Tourist Accommodation, Australia* (8635.0) (quarterly)

**26** Current publications produced by the ABS are listed in the *Catalogue of Publications and Products* (1101.0). The ABS also issues the *Publications Advice* (1105.0) on Tuesdays and Fridays which lists publications to be released in the next few days. Both the *Catalogue* and *Publications Advice* are available from any ABS office.

SYMBOLS AND  
OTHER USAGES

n.a. not available  
.. not applicable  
.. nil or rounded to zero  
(T) Town

**27** Where figures have been rounded, discrepancies may occur between totals and sums of the component items.

81 Smith Street  
DARWIN NT 0800  
2 September 1994

**BOB HARRISON**  
Statistician, Northern Territory

© Commonwealth of Australia 1994

Recommended retail price: \$15.00



2863570006944

ISSN 0157-1354

\*\*\*

\*\*\*